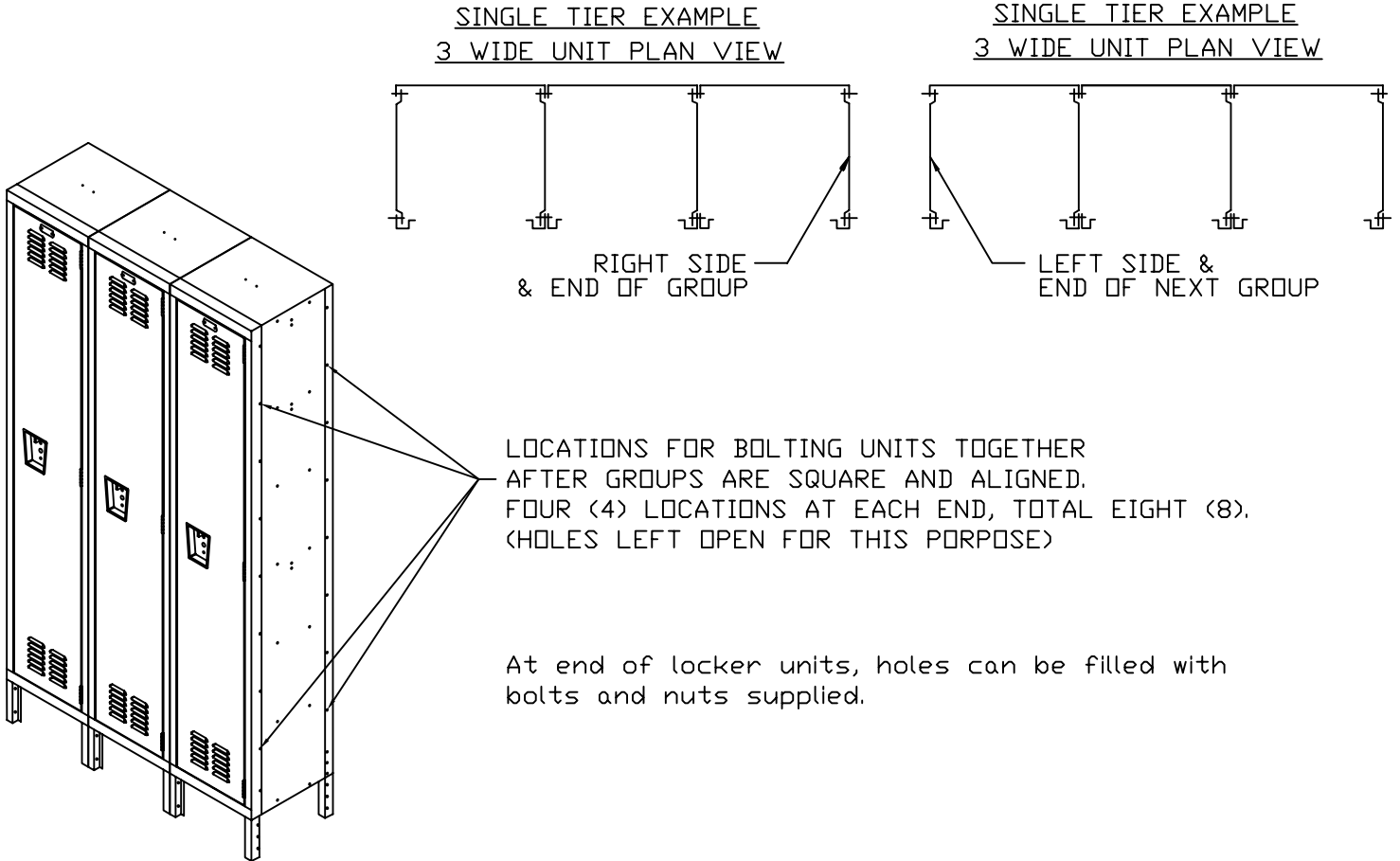


PRE-ASSEMBLED 3-WIDE, 1-TIER UNIT

PLEASE READ INSTRUCTIONS BEFORE INSTALLING LOCKERS.

STEP #1

Stand pre-assembled groups in place. Square up units with shims under REAR LEGS. TIGHTEN BOLTS AFTER GROUPS ARE SQUARE AND ALIGNED.

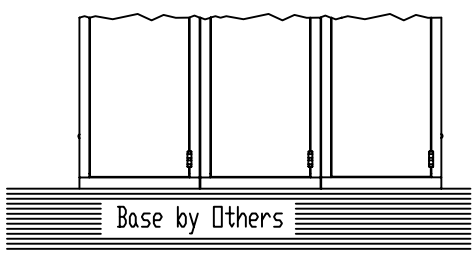


LOCATIONS FOR BOLTING UNITS TOGETHER AFTER GROUPS ARE SQUARE AND ALIGNED. FOUR (4) LOCATIONS AT EACH END, TOTAL EIGHT (8). (HOLES LEFT OPEN FOR THIS PURPOSE)

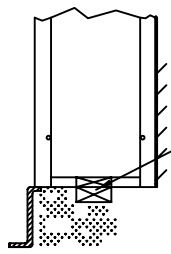
At end of locker units, holes can be filled with bolts and nuts supplied.

STEP #2

End lockers to be anchored plus Intermediate lockers on 36" centers MAX. Free standing lockers with legs MUST be anchored to floor through rear legs (see Sht. 2). Free standing lockers without legs MUST to anchored thru shelf to floor. Installer MUST use blocking under shelf to fill in space at bottom of locker.



Front Elevation



Vertical Section

Anchor with screws every 36" (max) and at the end of each row. (SLEEPER BY OTHERS)



877.952.0151

Sold By **SchoolLockers.com**

REVISIONS		
NO.	DATE	BY
3.	-	-
4.	-	-
5.	-	-
6.	-	-

PRE-ASSEMBLED 3-WIDE ANCHORING METHODS

DRWN BY	JMH	DATE	04-19-05	SCALE	NONE
CHK'D	RDW	DATE	04-19-05	DRWG NO.	SA-0522
APP'D		DATE			SHEET 1 of 2

RECOMMENDED ANCHORING METHODS

ANCHORS SUPPLIED BY OTHERS

WARNING:

FLOOR ANCHOR MUST HAVE A MINIMUM PULL-OUT VALUE OF 190 LBS.
WALL ANCHOR MUST HAVE A MINIMUM PULL-OUT VALUE OF 150 LBS.

CLEANING OF LOCKERS:

THE LOCKERS ARE COATED WITH A BAKED-ENAMEL FINISH.
THEY REQUIRE CLEANING WITH A VERY MILD,
NON-ABRASIVE TYPE PRODUCT.

NEVER:

USE A TOXIC CLEANER THAT CONTAINS AMMONIA OR ACID
OR HOSE DOWN WITH WATER.

