

72" HIGH SINGLE TIER ALL-WELDED DEFIANT II LOCKER

TYPICAL FOR 12" & 15" WIDE
TYPICAL FOR 12", 15", 18" & 21" DEEP

Sold By

SchoolLockers.com

877.952.0151

ALUMINUM NUMBER PLATE
(FIELD INSTALL)

ONE DOUBLE PRONG CEILING
HOOK & TWO SINGLE PRONG
WALL HOOKS EACH OPENING

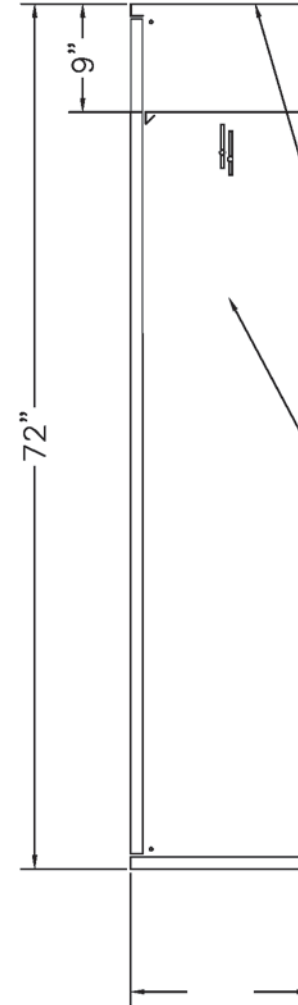
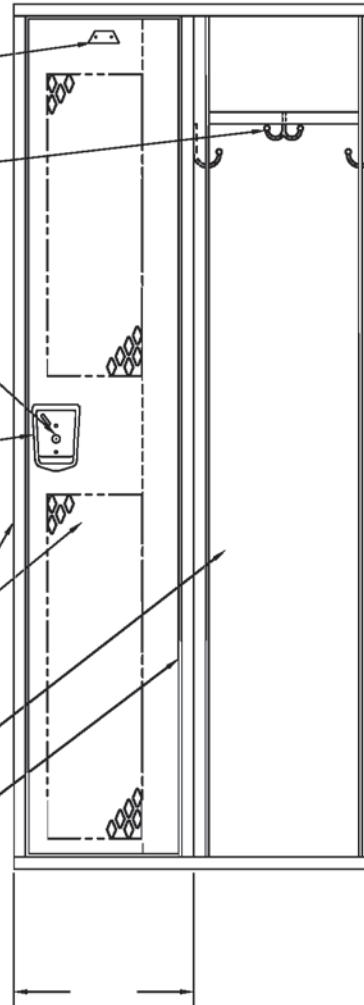
LOCK HOLE COVER PLATE

STAINLESS STEEL DEFIANT
HANDLE W/ PADLOCK HASP

16GA. FRAME ASSEMBLY &
14GA. DIAMOND PERF. DOOR W/
REINFORCMENT PAN

18GA. SOLID BACK

CONTINUOUS HINGE



BOLT WELDED LOCKER UNITS
TOGETHER @ 4 PLACES TYP.

ANCHOR LOCKERS TIGHT
TO WALL @ 36" O.C.
(ANCHORS BY OTHERS)

16GA. TOP, BOTTOM &
SHELF/TIER HEAD

16GA. DIAMOND PERF. DIVISION
SOLID @ ROW ENDS

ALLOW 1/16" CREEPAGE PER FRAME

72" HIGH SINGLE TIER ALL-WELDED DEFIANT II LOCKER

TYPICAL FOR 18" WIDE
TYPICAL FOR 15", 18", 21" & 24" DEEP

Sold By
SchoolLockers.com
877.952.0151

ALUMINUM NUMBER PLATE
(FIELD INSTALL)

ONE DOUBLE PRONG CEILING
HOOK & FOUR SINGLE PRONG
WALL HOOKS EACH OPENING

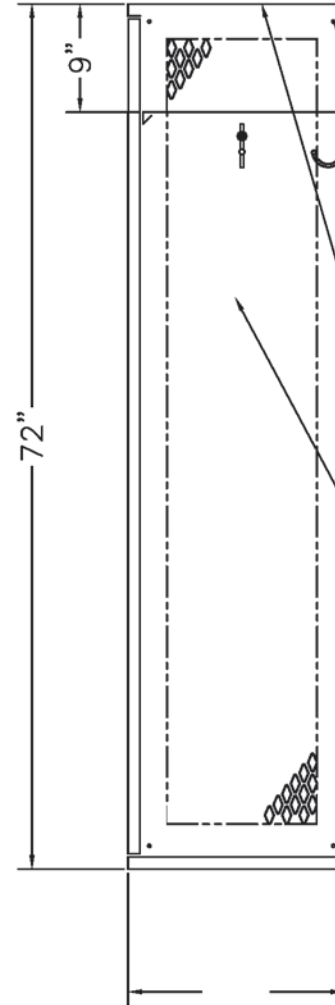
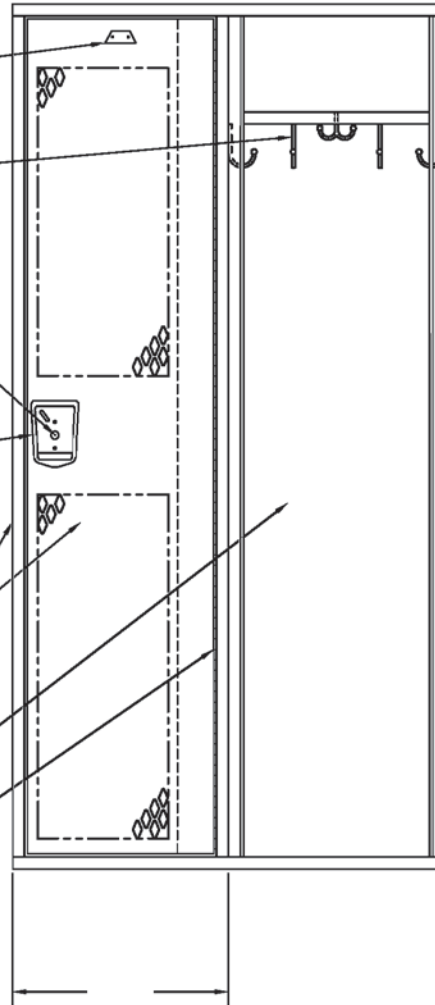
LOCK HOLE COVER PLATE

STAINLESS STEEL DEFIANT
HANDLE W/ PADLOCK HASP

16GA. FRAME ASSEMBLY &
14GA. DIAMOND PERF. DOOR W/
REINFORCMENT PAN

18GA. SOLID BACK

CONTINUOUS HINGE



BOLT WELDED LOCKER UNITS
TOGETHER @ 4 PLACES TYP.

ANCHOR LOCKERS TIGHT
TO WALL @ 36" O.C.
(ANCHORS BY OTHERS)

16GA. TOP, BOTTOM &
SHELF/TIER HEAD

16GA. DIAMOND PERF. DIVISION
SOLID @ ROW ENDS

ALLOW 1/16" CREEPAGE PER FRAME

72" HIGH SINGLE TIER ALL-WELDED DEFIANT II LOCKER

Sold By
SchoolLockers.com
877.952.0151

TYPICAL FOR 24" WIDE
TYPICAL FOR 18", 21" & 24" DEEP

ALUMINUM NUMBER PLATE
(FIELD INSTALL)

ONE DOUBLE PRONG CEILING
HOOK & FOUR SINGLE PRONG
WALL HOOKS EACH OPENING

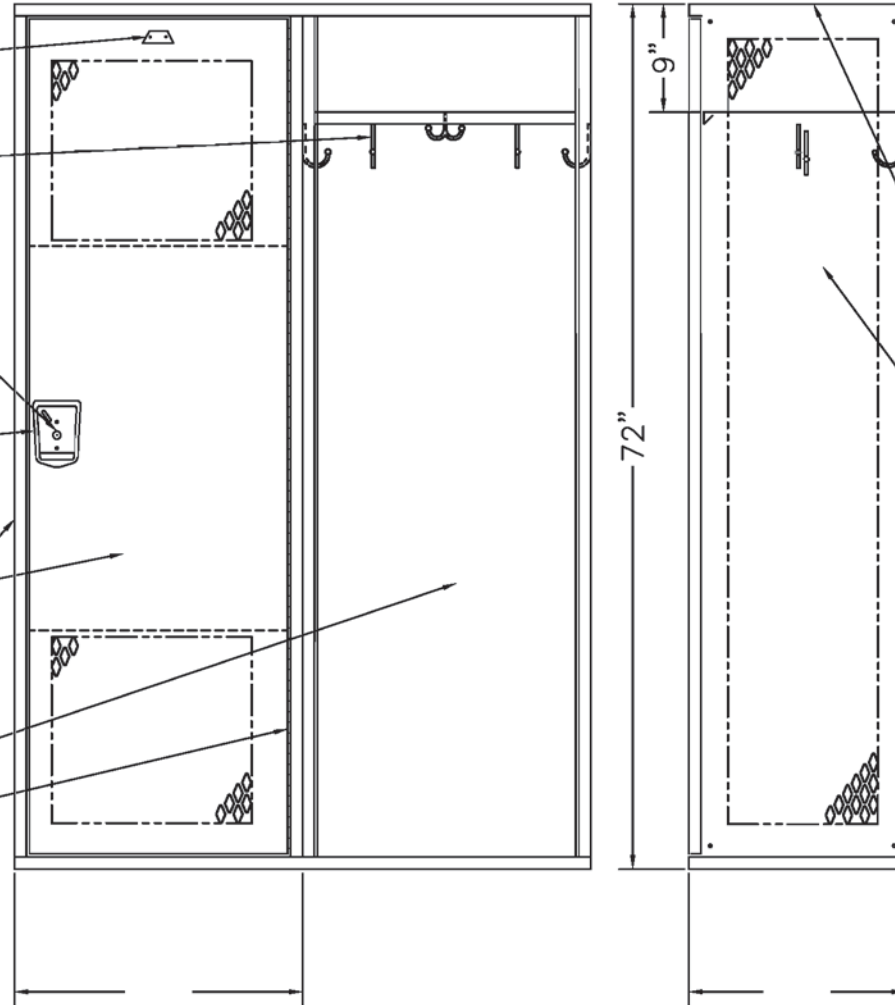
LOCK HOLE COVER PLATE

STAINLESS STEEL DEFIANT
HANDLE W/ PADLOCK HASP

16GA. FRAME ASSEMBLY &
14GA. DIAMOND PERF. DOOR W/
REINFORCMENT PAN

18GA. SOLID BACK

CONTINUOUS HINGE



BOLT WELDED LOCKER UNITS
TOGETHER @ 4 PLACES TYP.

ANCHOR LOCKERS TIGHT
TO WALL @ 36" O.C.
(ANCHORS BY OTHERS)

16GA. TOP, BOTTOM &
SHELF/TIER HEAD

16GA. DIAMOND PERF
DIVISION, SOLID @ ROW
END

ALLOW 1/16" CREEPAGE PER FRAME

60" HIGH SINGLE TIER ALL-WELDED DEFIANT II LOCKER

TYPICAL FOR 12" & 15" WIDE
TYPICAL FOR 12", 15", 18" & 21" DEEP

Sold By
SchoolLockers.com
877.952.0151

ALUMINUM NUMBER PLATE
(FIELD INSTALL)

ONE DOUBLE PRONG CEILING
HOOK & TWO SINGLE PRONG
WALL HOOKS EACH OPENING

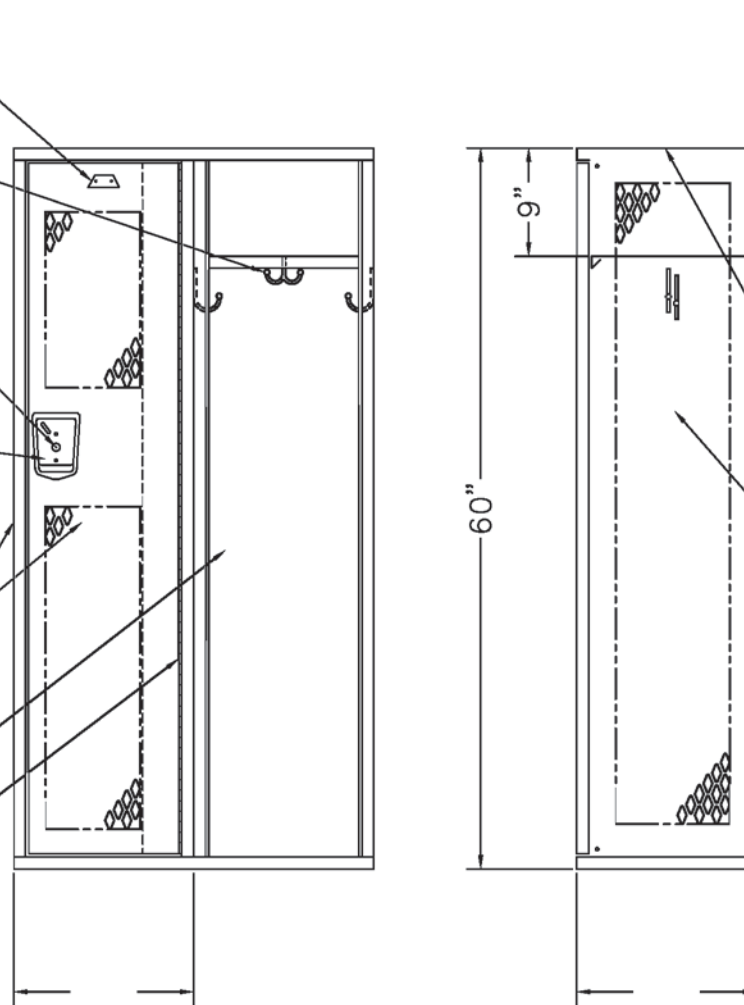
LOCK HOLE COVER PLATE

STAINLESS STEEL DEFIANT
HANDLE W/ PADLOCK HASP

16GA. FRAME ASSEMBLY &
14GA. DIAMOND PERF. DOOR W/
REINFORCMENT PAN

18GA. SOLID BACK

CONTINUOUS HINGE



BOLT WELDED LOCKER UNITS
TOGETHER @ 4 PLACES TYP.

ANCHOR LOCKERS TIGHT
TO WALL @ 36" O.C.
(ANCHORS BY OTHERS)

16GA. TOP, BOTTOM &
SHELF/TIER HEAD

16GA. DIAMOND PERF. DIVISION
SOLID @ ROW ENDS

ALLOW 1/16" CREEPAGE PER FRAME

60" HIGH SINGLE TIER ALL-WELDED DEFIANT II LOCKER

TYPICAL FOR 18" WIDE
TYPICAL FOR 15", 18", 21" & 24" DEEP

Sold By
SchoolLockers.com
877.952.0151

ALUMINUM NUMBER PLATE
(FIELD INSTALL)

ONE DOUBLE PRONG CEILING
HOOK & FOUR SINGLE PRONG
WALL HOOKS EACH OPENING

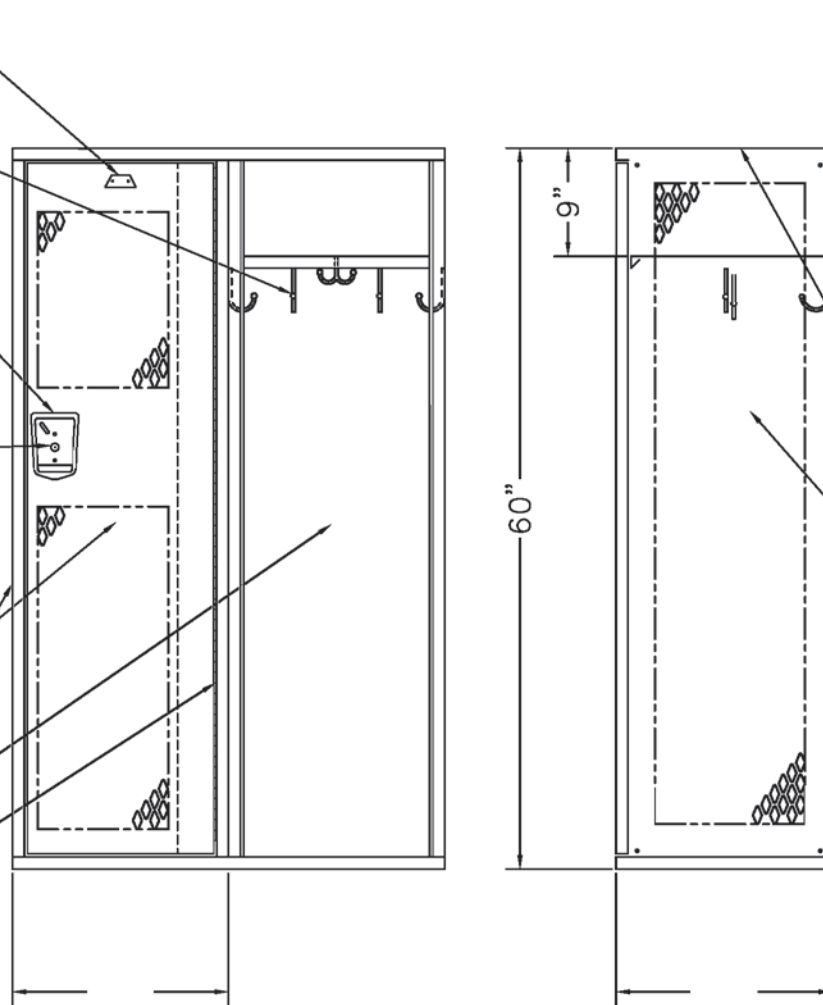
LOCK HOLE COVER PLATE

STAINLESS STEEL DEFIANT
HANDLE W/ PADLOCK HASP

16GA. FRAME ASSEMBLY &
14GA. DIAMOND PERF. DOOR W/
REINFORCMENT PAN

18GA. SOLID BACK

CONTINUOUS HINGE



BOLT WELDED LOCKER UNITS
TOGETHER @ 4 PLACES TYP.

ANCHOR LOCKERS TIGHT
TO WALL @ 36" O.C.
(ANCHORS BY OTHERS)

16GA. TOP, BOTTOM &
SHELF/TIER HEAD

16GA. DIAMOND PERF
DIVISION, SOLID @ ROW
END

ALLOW 1/16" CREEPAGE PER FRAME

60" HIGH SINGLE TIER ALL-WELDED DEFIANT II LOCKER

TYPICAL FOR 24" WIDE
TYPICAL FOR 18", 21" & 24" DEEP

Sold By
SchoolLockers.com
877.952.0151

ALUMINUM NUMBER PLATE
(FIELD INSTALL)

ONE DOUBLE PRONG CEILING
HOOK & FOUR SINGLE PRONG
WALL HOOKS EACH OPENING

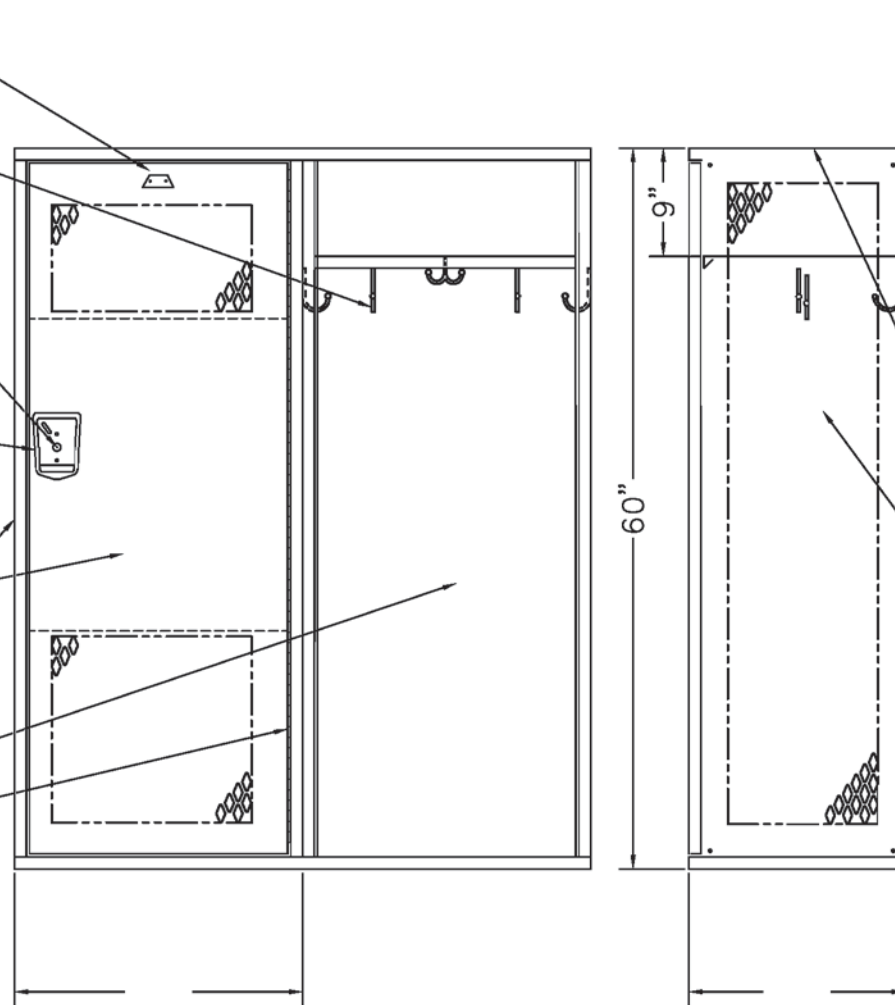
LOCK HOLE COVER PLATE

STAINLESS STEEL DEFIANT
HANDLE W/ PADLOCK HASP

16GA. FRAME ASSEMBLY &
14GA. DIAMOND PERF. DOOR W/
REINFORCMENT PAN

18GA. SOLID BACK

CONTINUOUS HINGE



BOLT WELDED LOCKER UNITS
TOGETHER @ 4 PLACES TYP.

ANCHOR LOCKERS TIGHT
TO WALL @ 36" O.C.
(ANCHORS BY OTHERS)

16GA. TOP, BOTTOM &
SHELF/TIER HEAD

16GA. DIAMOND PERF
DIVISION, SOLID @ ROW
END

ALLOW 1/16" CREEPAGE PER FRAME