

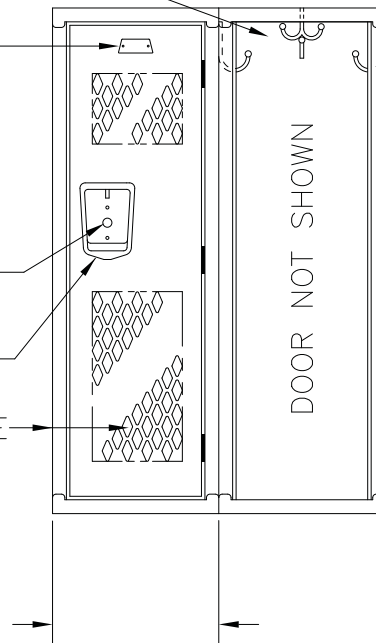
ONE DBL. PRONG CEILING
HOOK & THREE SGL. PRONG
WALL HOOKS EA. OPG.

ALUMINUM NO. PLATE

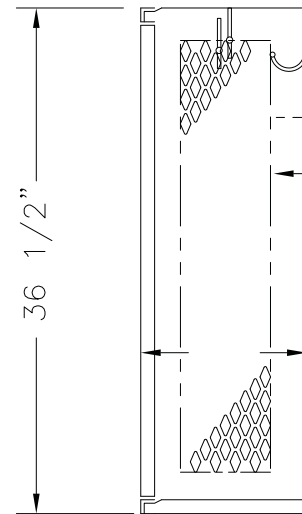
LOCK HOLE COVER PLATE

STAINLESS STEEL RECESSED
POCKET WITH PADLOCK EYE

14GA. DOOR & 16GA. FRAME
DOOR RECEIVES DIAMOND
PERFORATIONS



ELEVATION



16GA. TOP, BOTTOM,
SHELF & DIVISIONS
DIVISION RECEIVES DIAMOND
PERFORATIONS
18GA. BACK

SECTION @ WALL

Sold By

SchoolLockers.com

877.952.0151

36 1/2" HIGH SINGLE TIER INVINCIBLE II KNOCKDOWN

TYPICAL FOR 9" & 12" WIDE, ALLOW 1/16" CREEPAGE PER FRAME

TYPICAL FOR 12", 15", & 18" DEEP

This drawing shows a standard Penco Product. Any modifications to the product must be approved by Penco Engineering. 8/6/2001



121236INV.dwg

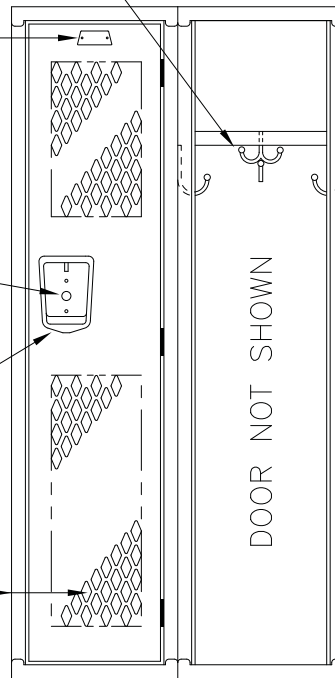
ONE DBL. PRONG CEILING
HOOK & THREE SGL. PRONG
WALL HOOKS EA. OPG.

ALUMINUM NO. PLATE

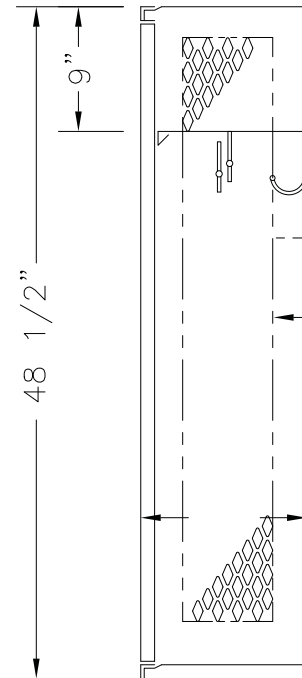
LOCK HOLE COVER PLATE

STAINLESS STEEL RECESSED
POCKET WITH PADLOCK EYE

14GA. DOOR & 16GA. FRAME
DOOR RECEIVES DIAMOND
PERFORATIONS



ELEVATION



16GA. TOP, BOTTOM,
SHELF & DIVISIONS
DIVISION RECEIVES DIAMOND
PERFORATIONS

18GA. BACK

48 1/2"

9"

SECTION @ WALL

Sold By

SchoolLockers.com

877.952.0151

48 1/2" HIGH SINGLE TIER INVINCIBLE II KNOCKDOWN LOCKER

TYPICAL FOR 9" & 12" WIDE, ALLOW 1/16" CREEPAGE PER FRAME

TYPICAL FOR 12" & 15" DEEP

This drawing shows a standard Penco Product. Any modifications
to the product must be approved by Penco Engineering. 8/6/2001



121248INV.dwg

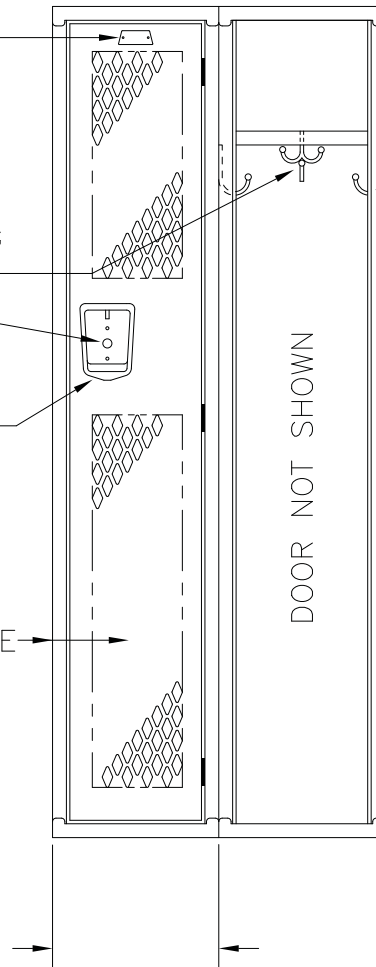
ALUMINUM NO. PLATE

ONE DBL. PRONG CEILING
HOOK & THREE SGL. PRONG
WALL HOOKS EA. OPG.

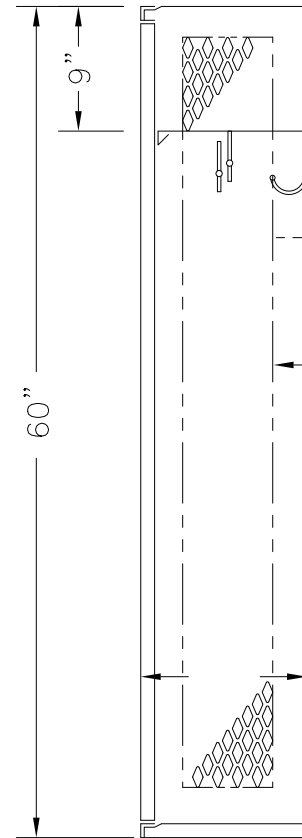
LOCK HOLE COVER PLATE

STAINLESS STEEL RECESSED
POCKET WITH PADLOCK EYE

14GA. DOOR & 16GA. FRAME
DOOR RECEIVES DIAMOND
PERFORATIONS



ELEVATION



16GA. TOP, BOTTOM,
SHELF & DIVISIONS
DIVISION RECEIVES DIAMOND
PERFORATIONS

18GA. BACK

SECTION @ WALL

60" HIGH SINGLE TIER INVINCIBLE II KNOCKDOWN LOCKER

TYPICAL FOR 9" & 12" WIDE, ALLOW 1/16" CREEPAGE PER FRAME
TYPICAL FOR 12" & 15" DEEP

Sold By
SchoolLockers.com
877.952.0151

This drawing shows a standard Penco Product. Any modifications
to the product must be approved by Penco Engineering. 8/6/2001



121260INV.dwg

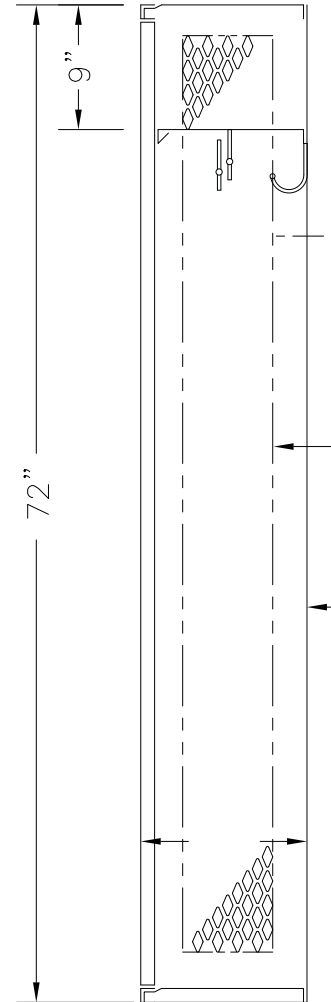
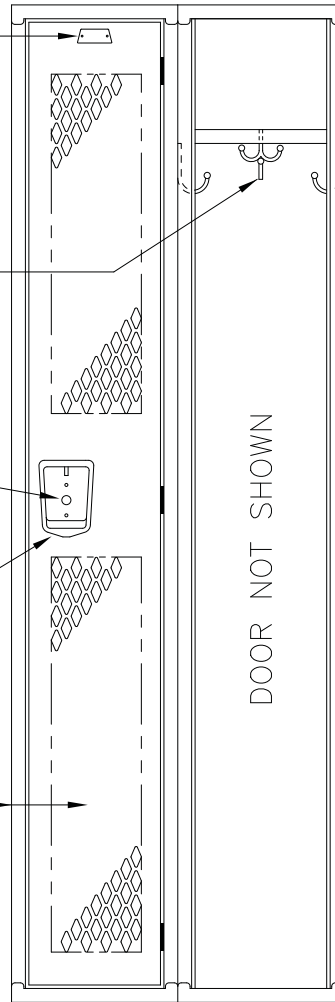
ALUMINUM NO. PLATE

ONE DBL. PRONG CEILING HOOK & THREE SGL. PRONG WALL HOOKS EA. OPG.

LOCK HOLE COVER PLATE

STAINLESS STEEL RECESSED POCKET WITH PADLOCK EYE

14GA. DOOR & 16GA. FRAME
DOOR RECEIVES DIAMOND PERFORATIONS



16GA. TOP, BOTTOM, SHELF & DIVISIONS
DIVISION RECEIVES DIAMOND PERFORATIONS

18GA. BACK

Sold By

SchoolLockers.com

877.952.0151

ELEVATION

SECTION @ WALL

72" HIGH SINGLE TIER INVINCIBLE II KNOCKDOWN LOCKER

9" & 12" WIDE, ALLOW 1/16" CREEPAGE PER FRAME
TYPICAL FOR 12" & 15" DEEP

This drawing shows a standard Penco Product. Any modifications to the product must be approved by Penco Engineering. 8/6/2001



121272INV.dwg

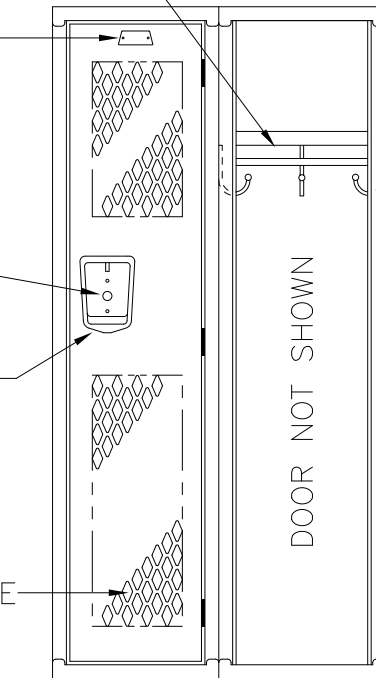
ONE COAT ROD &
THREE SGL. PRONG
WALL HOOKS EA. OPG.

ALUMINUM NO. PLATE

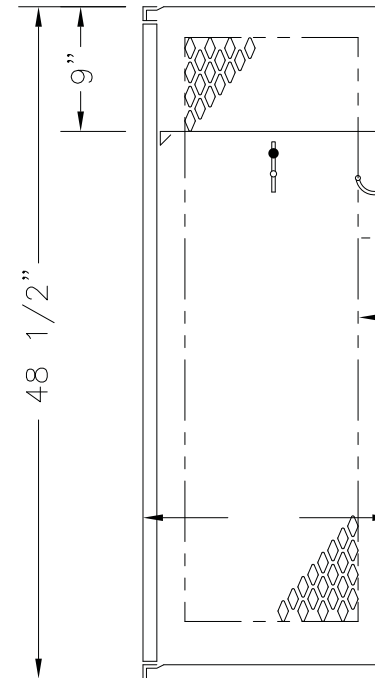
LOCK HOLE COVER PLATE

STAINLESS STEEL RECESSED
POCKET WITH PADLOCK EYE

14GA. DOOR & 16GA. FRAME
DOOR RECEIVES DIAMOND
PERFORATIONS



ELEVATION



16GA. TOP, BOTTOM,
SHELF & DIVISIONS
DIVISION RECEIVES DIAMOND
PERFORATIONS

18GA. BACK

SECTION @ WALL

Sold By

SchoolLockers.com

877.952.0151

48 1/2" HIGH SINGLE TIER INVINCIBLE II KNOCKDOWN LOCKER

TYPICAL FOR 9" & 12" WIDE, ALLOW 1/16" CREEPAGE PER FRAME

TYPICAL FOR 18" & 21" & 24" DEEP

This drawing shows a standard Penco Product. Any modifications to the product must be approved by Penco Engineering. 8/6/2001



121848INV.dwg

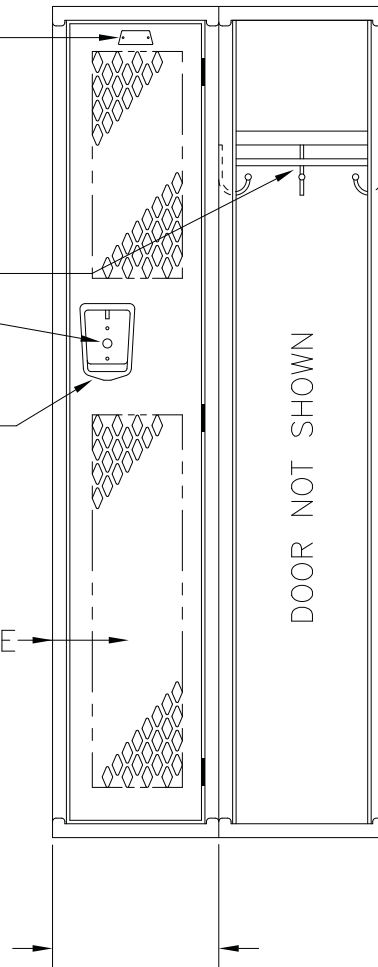
ALUMINUM NO. PLATE

ONE COAT ROD &
THREE SGL. PRONG
WALL HOOKS EA. OPG.

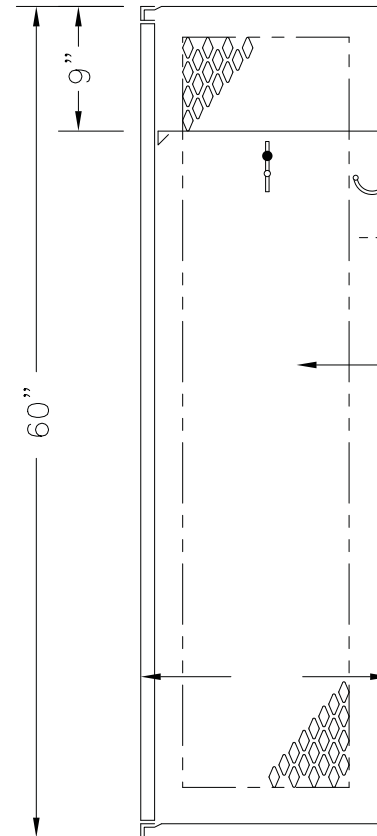
LOCK HOLE COVER PLATE

STAINLESS STEEL RECESSED
POCKET WITH PADLOCK EYE

14GA. DOOR & 16GA. FRAME
DOOR RECEIVES DIAMOND
PERFORATIONS



ELEVATION



SECTION @ WALL

60" HIGH SINGLE TIER INVINCIBLE II KNOCKDOWN LOCKER

9" & 12" WIDE, ALLOW 1/16" CREEPAGE PER FRAME

TYPICAL FOR 18", 21", & 24" DEEP

Sold By

SchoolLockers.com

877.952.0151

This drawing shows a standard Penco Product. Any modifications to the product must be approved by Penco Engineering. 8/6/2001



121860INV.dwg

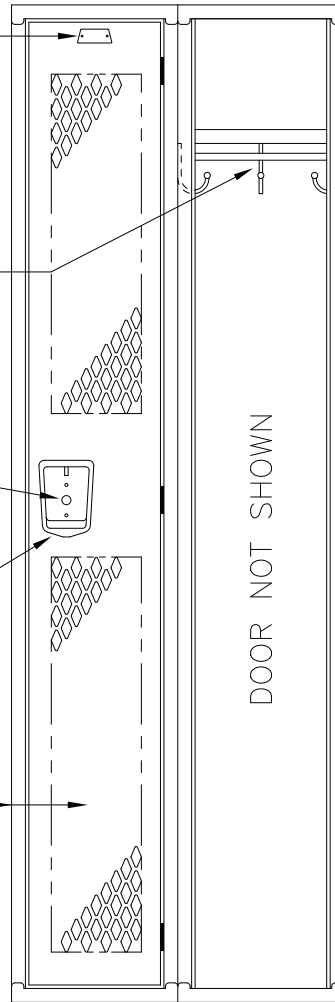
ALUMINUM NO. PLATE

ONE COAT ROD &
THREE SGL. PRONG
WALL HOOKS EA. OPG.

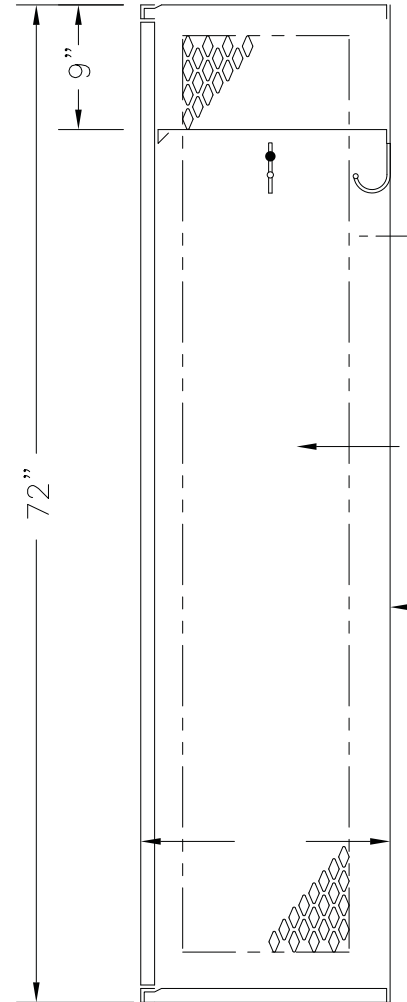
LOCK HOLE COVER PLATE

STAINLESS STEEL RECESSED
POCKET WITH PADLOCK EYE

14GA. DOOR & 16GA. FRAME
DOOR RECEIVES DIAMOND
PERFORATIONS



ELEVATION



16GA. TOP, BOTTOM,
SHELF & DIVISIONS
DIVISION RECEIVES DIAMOND
PERFORATIONS

18GA. BACK

SECTION @ WALL

72" HIGH SINGLE TIER INVINCIBLE II KNOCKDOWN LOCKER

9" & 12" WIDE, ALLOW 1/16" CREEPAGE PER FRAME
TYPICAL FOR 18", 21", & 24" DEEP

Sold By
SchoolLockers.com
877.952.0151

This drawing shows a standard Penco Product. Any modifications
to the product must be approved by Penco Engineering. 8/6/2001



121872INV.dwg

ALUMINUM NO. PLATE

ONE DBL. PRONG CEILING
HOOK & FOUR SGL. PRONG
WALL HOOKS EA. OPG.

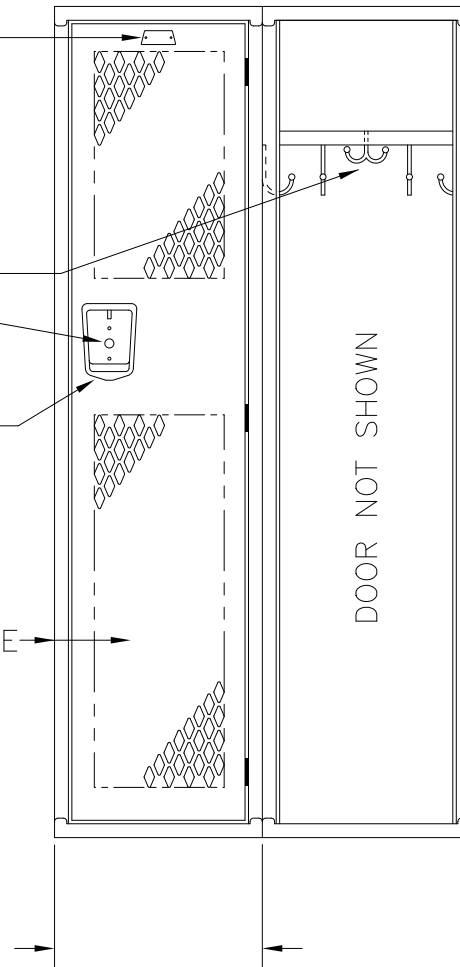
LOCK HOLE COVER PLATE

STAINLESS STEEL RECESSED
POCKET WITH PADLOCK EYE

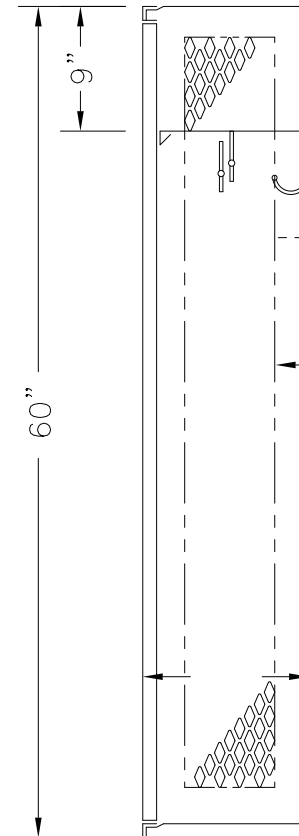
14GA. DOOR & 16GA. FRAME

DOOR RECEIVES DIAMOND
PERFORATIONS

18" RECEIVES DOOR REINFORCING PAN



ELEVATION



SECTION @ WALL

60" HIGH SINGLE TIER INVINCIBLE II KNOCKDOWN LOCKER
15" & 18" WIDE, ALLOW 1/16" CREEPAGE PER FRAME
TYPICAL FOR 12" & 15" DEEP

Sold By
SchoolLockers.com
877.952.0151

This drawing shows a standard Penco Product. Any modifications
to the product must be approved by Penco Engineering. 8/6/2001



151260INV.dwg

ALUMINUM NO. PLATE

ONE DBL. PRONG CEILING
HOOK & FOUR SGL. PRONG
WALL HOOKS EA. OPG.

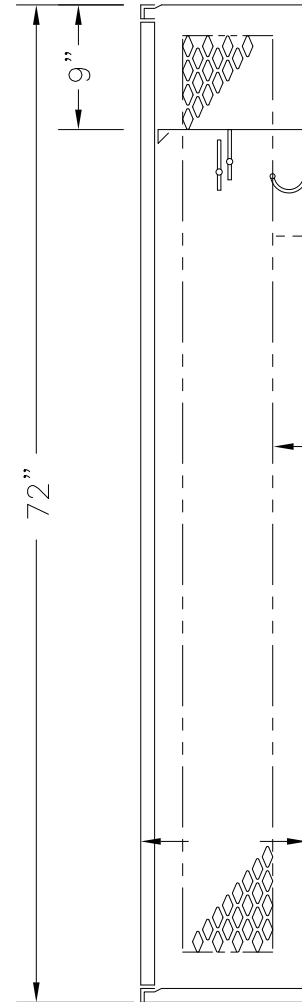
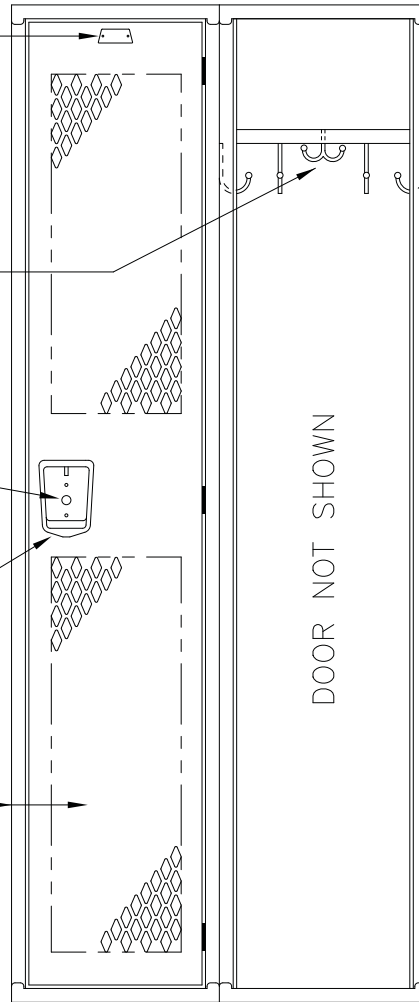
LOCK HOLE COVER PLATE

STAINLESS STEEL RECESSED
POCKET WITH PADLOCK EYE

14GA. DOOR & 16GA. FRAME

DOOR RECEIVES DIAMOND
PERFORATIONS

18" RECEIVES DOOR REINFORCING PAN



16GA. TOP, BOTTOM,
SHELF & DIVISIONS
DIVISION RECEIVES DIAMOND
PERFORATIONS

18GA. BACK

Sold By

SchoolLockers.com

877.952.0151

ELEVATION

SECTION @ WALL

72" HIGH SINGLE TIER INVINCIBLE II KNOCKDOWN LOCKER

15" & 18" WIDE, ALLOW 1/16" CREEPAGE PER FRAME

TYPICAL FOR 12" & 15" DEEP

This drawing shows a standard Penco Product. Any modifications to the product must be approved by Penco Engineering. 8/6/2001



151272INV.dwg

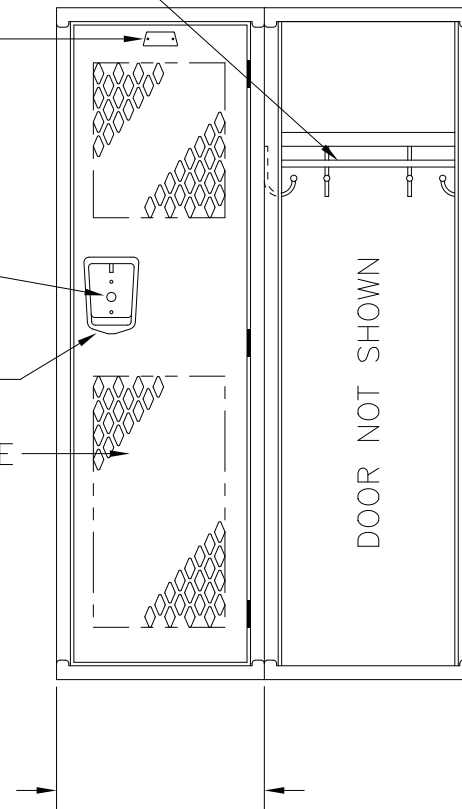
ONE COAT ROD &
FOUR SGL. PRONG
WALL HOOKS EA. OPG.

ALUMINUM NO. PLATE

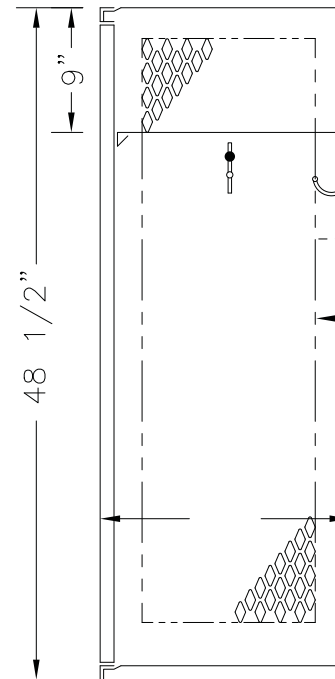
LOCK HOLE COVER PLATE

STAINLESS STEEL RECESSED
POCKET WITH PADLOCK EYE

14GA. DOOR & 16GA. FRAME
DOOR RECEIVES DIAMOND
PERFORATIONS
18" RECEIVES DOOR REINFORCING PAN



ELEVATION



16GA. TOP, BOTTOM,
SHELF & DIVISIONS
DIVISION RECEIVES DIAMOND
PERFORATIONS

18GA. BACK

SECTION @ WALL

Sold By
SchoolLockers.com
877.952.0151

48 1/2" HIGH SINGLE TIER INVINCIBLE II LOCKER

TYPICAL FOR 15" & 18" WIDE, ALLOW 1/16" CREEPAGE PER FRAME
TYPICAL FOR 18", 21", & 24" DEEP

This drawing shows a standard Penco Product. Any modifications
to the product must be approved by Penco Engineering. 8/6/2001



151848INV.dwg

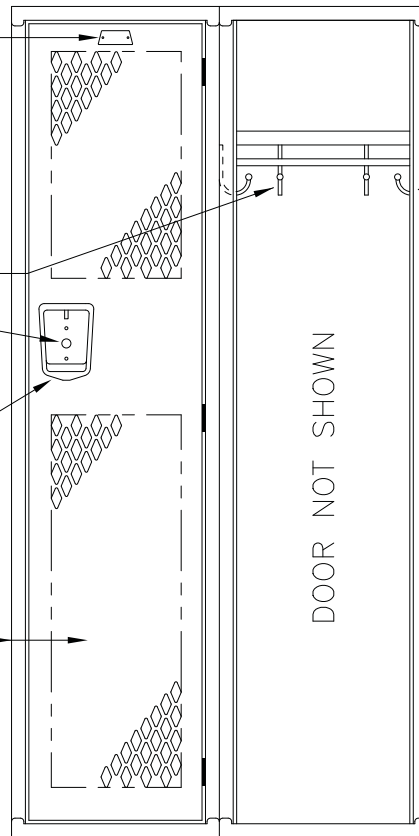
ALUMINUM NO. PLATE

ONE COAT ROD &
FOUR SGL. PRONG
WALL HOOKS EA. OPG.

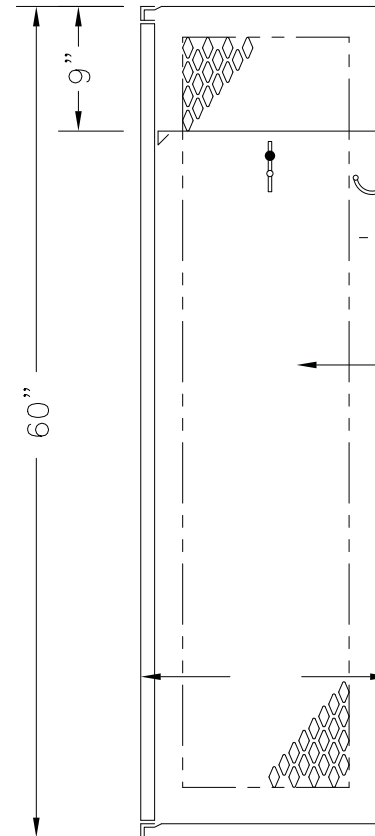
LOCK HOLE COVER PLATE

STAINLESS STEEL RECESSED
POCKET WITH PADLOCK EYE

14GA. DOOR & 16GA. FRAME
DOOR RECEIVES DIAMOND
PERFORATIONS
18" RECEIVES DOOR REINFORCING PAN



ELEVATION



SECTION @ WALL

16GA. TOP, BOTTOM,
SHELF & DIVISIONS
DIVISION RECEIVES DIAMOND
PERFORATIONS

18GA. BACK

Sold By
SchoolLockers.com
877.952.0151

60" HIGH SINGLE TIER INVINCIBLE II KNOCKDOWN LOCKER
15" & 18" WIDE, ALLOW 1/16" CREEPAGE PER FRAME
TYPICAL FOR 18", 21", & 24" DEEP

This drawing shows a standard Penco Product. Any modifications to the product must be approved by Penco Engineering. 8/6/2001



151860INV.dwg

ALUMINUM NO. PLATE

ONE COAT ROD &
FOUR SGL. PRONG
WALL HOOKS EA. OPG.

LOCK HOLE COVER PLATE

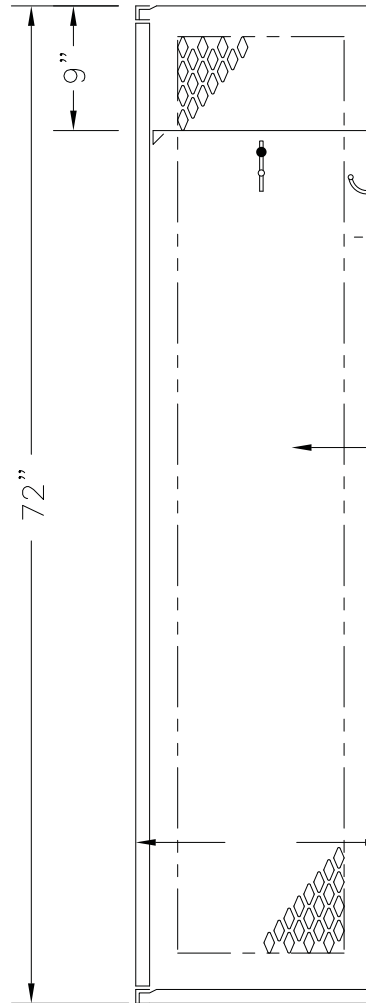
STAINLESS STEEL RECESSED
POCKET WITH PADLOCK EYE

14GA. DOOR & 16GA. FRAME

DOOR RECEIVES DIAMOND
PERFORATIONS

18" RECEIVES DOOR REINFORCING PAN

DOOR NOT SHOWN



16GA. TOP, BOTTOM,
SHELF & DIVISIONS
DIVISION RECEIVES DIAMOND
PERFORATIONS

18GA. BACK

Sold By

SchoolLockers.com

877.952.0151

ELEVATION

SECTION @ WALL

72" HIGH SINGLE TIER INVINCIBLE II KNOCKDOWN LOCKER

15" & 18" WIDE, ALLOW 1/16" CREEPAGE PER FRAME

TYPICAL FOR 18", 21" & 24" DEEP

This drawing shows a standard Penco Product. Any modifications to the product must be approved by Penco Engineering. 8/6/2001



151872INV.dwg

ALUMINUM NO. PLATE

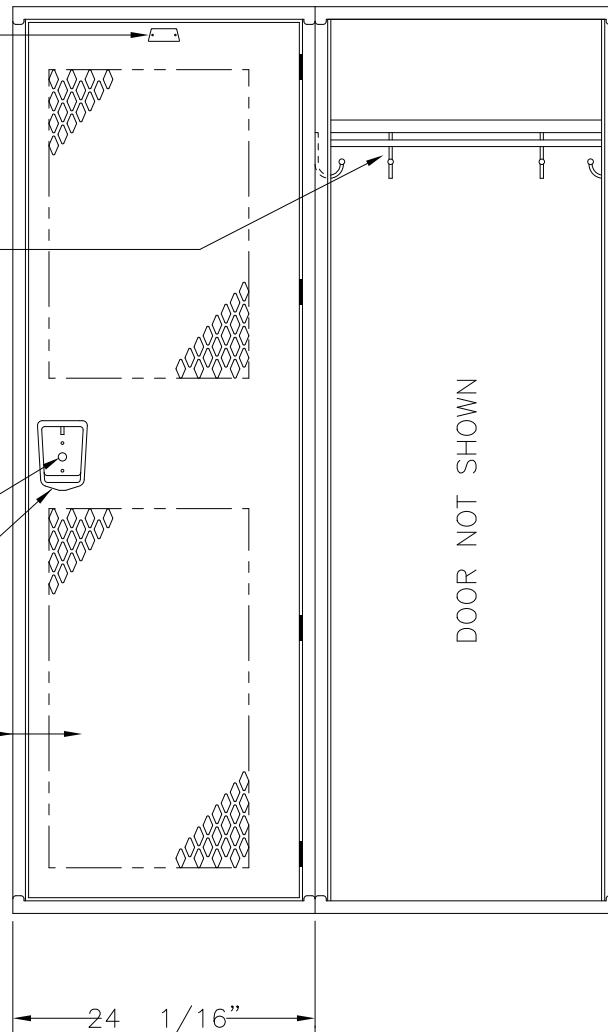
ONE COAT ROD & FOUR
SGL. PRONG WALL HOOKS
EA. OPG.

15" DEEP RECEIVES DBL.
PRONG CEILING HOOK IN
LIEU OF COAT ROD

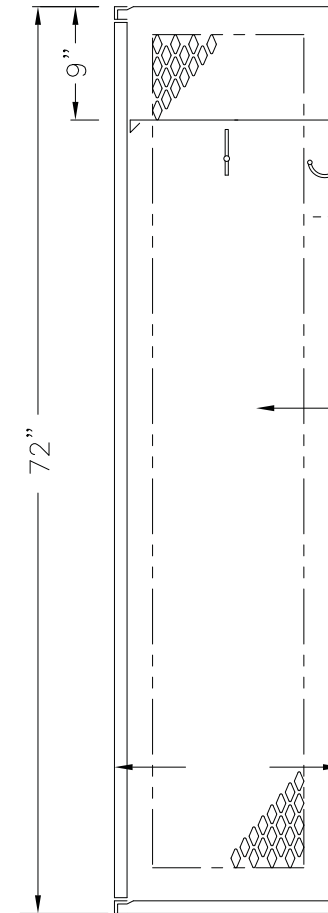
LOCK HOLE COVER PLATE

STAINLESS STEEL RECESSED
POCKET WITH PADLOCK EYE

14GA. DOOR & 16GA. FRAME
DOOR RECEIVES REINFORCING PAN
DOOR RECEIVES DIAMOND
PERFORATIONS



ELEVATION



SECTION @ WALL

Sold By
SchoolLockers.com
877.952.0151

72" HIGH SINGLE TIER SINGLE DOOR INVINCIBLE II KNOCKDOWN LOCKER

This drawing shows a standard Penco Product. Any modifications to the product must be approved by Penco Engineering. 8/6/2001

24" WIDE, ALLOW 1/16" CREEPAGE PER FRAME
TYPICAL FOR 18", 21", & 24" DEEP



241872INV.dwg