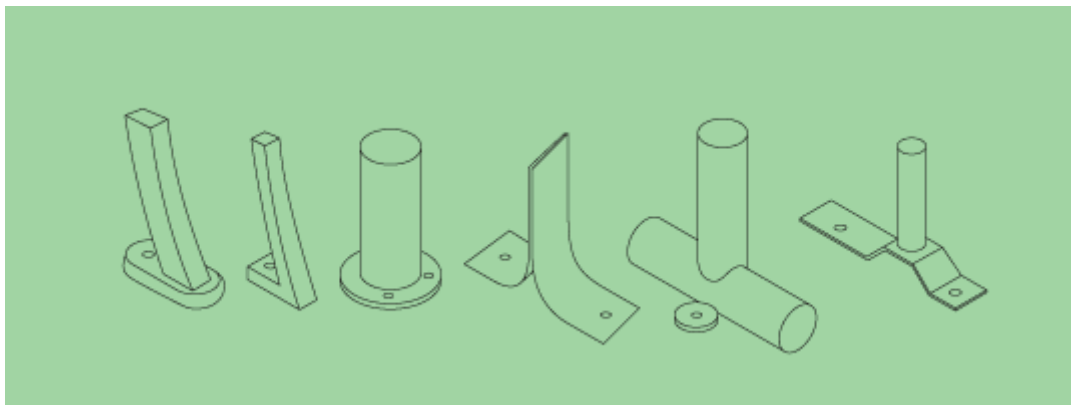


SchoolLockers.com

SchoolLockers.com features several different mounting styles for our products as shown below.

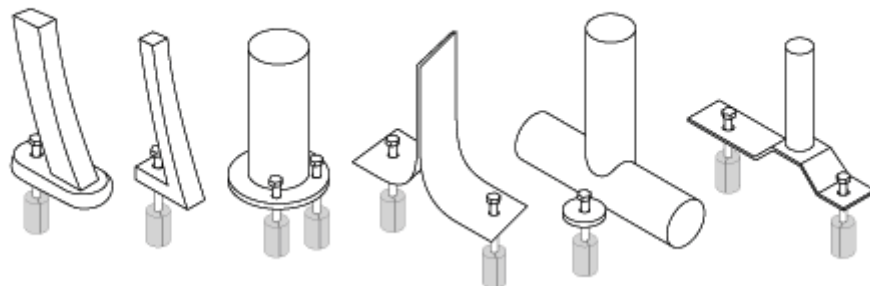
Portable Mount

Portable mounts may have surface mount holes in the legs of the furniture, but if the pieces are not secured with bolts and anchors, the furniture may be moved. Furniture with a tubular understructure has no surface mounting holes. Portable Mount furniture may be placed on any surface.



Surface Mount

Most surface mount fixtures have holes in the legs of the furniture for bolts to be inserted into anchors embedded in concrete. When installing, holes must be drilled into existing concrete surfaces to embed anchors for the bolts. Furniture with tubular understructure has discs welded to the understructure which rest flat on the ground so that bolts and anchors can then be secured through the discs. Surface mount furniture is placed on a concrete surface.



In-Ground Mount

In-ground mounted furniture resembles surface mounted furniture, but includes "J-Rods" to be inserted through the surface mount holes on a piece of furniture. The bottom of the J-Rod is then embedded in a hole filled with concrete. When the concrete cures, the shape of the J-Rod secures the furniture. Benches that have tubular legs and are in-ground mounted do not use J-Rods. Instead, the understructure ends in approximately 18" of extra pipe (see far right) with a piece of flatbar welded to the bottom. A deep hole is then dug and filled with concrete. The bench is then set in the concrete to cure. In-ground mounted furniture is placed on a grass or soil surface.

